

BIO(AGRO) TERRORISM/CRIME IN POST-COVID ERA IN CONTEXT OF MASSIVE SCALE DISSEMINATION OF MICROBIOLOGY/EPIDEMIOLOGY KNOWLEDGE

Andrzej JARYNOWSKI IBI Wrocław/FU Berlin

Łukasz KRZOWSKI Biodefense Laboratory/Military University of Technology in Warsaw

Background of possible shift from human host to animal/plant hosts bioterrorism/crime

The COVID-19 pandemic has contributed to a significant increase in **knowledge and technology** that can be used for the deliberate introduction of known pathogens :

- **the ease of acquisition** (knowledge of basic microbiology and pathogenesis);
- **verification of the infectious agent** (access to diagnostics);
- **ease of introduction** (knowledge of basic epidemiology as well as transmission routes).

Research Questions

Case Study - Intentional introduction of ASF (African Swine Fever)

- 1) In what extent the existing **barrier** of possessing microbiological qualifications and laboratory equipment has been **lowered for potential „Lone wolf” terrorists** or small organizations?
- 2) Would **the repertoire of terrorists change** over the next few years (**Agroterrorism/Agrocrime** - new targets as i.e. reduction of CO₂ emission or hybrid war)?

„Lone wolves” motivation in agroterrorism?

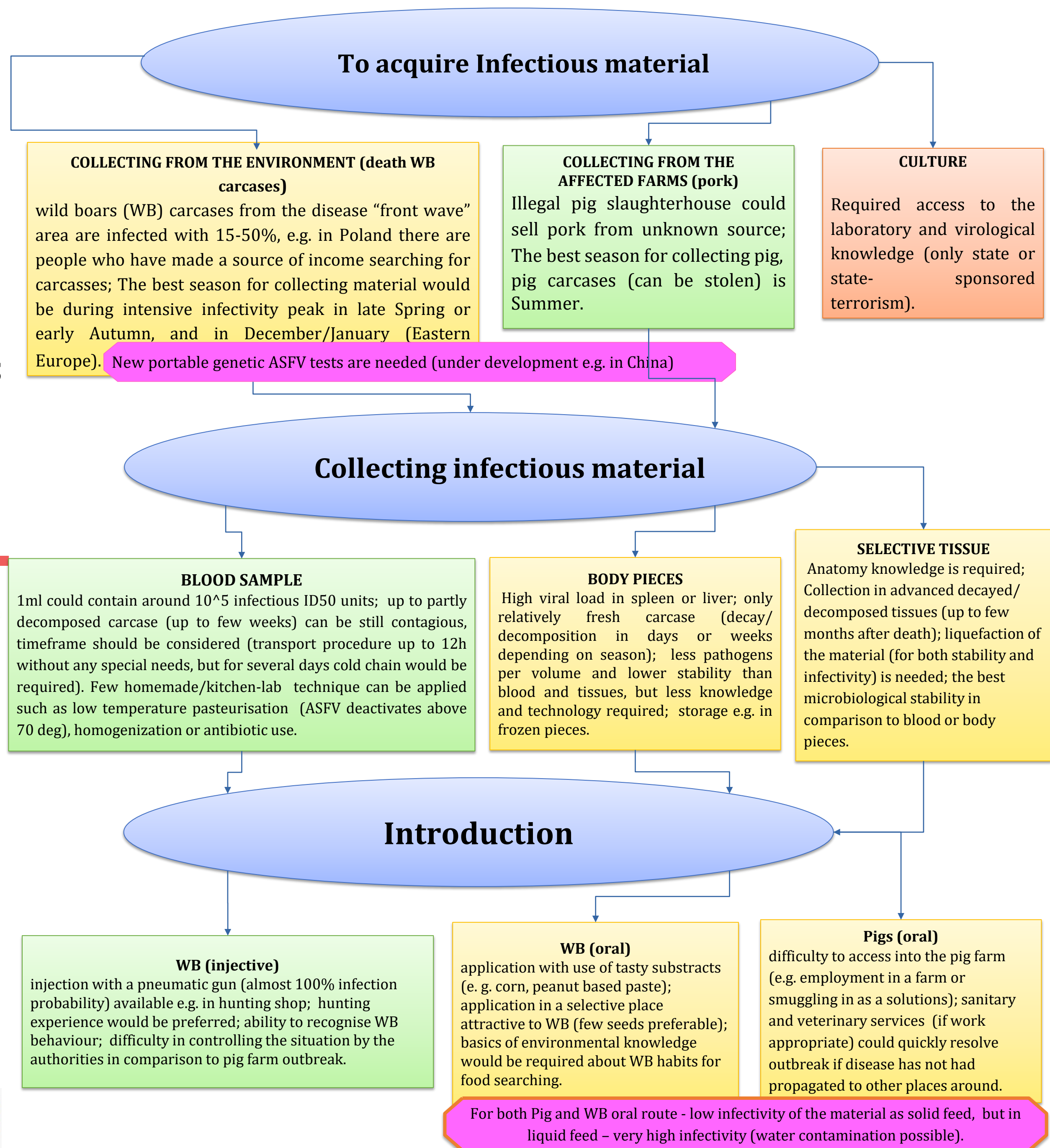
Pros:

- Collect pathogen, and transport material **without jeopardizing their own health**;
- **Low cost, high impact on economy and almost no risks** (little intelligence surveillance of non-human bio-agents);
- Possible ideological motivations such as Green Deal, Climate Change Activism, etc.



Cons:

- **No Panic effect!** and low public interest in animal/plant diseases. Lack of psycho-sociological effects of intentional introduction, so would be a potential terrorist even aware of using agroterrorism?
- Ethical dissonance for potential terrorist.



- Intentional introduction of animal pathogens into a disease-free area **was simple and now it is extremely simple (see ASF introduction case study)**
- Completely new challenges for the antiterrorism formations, as bioterrorism previously could only be chosen by organizations with adequate financial resources and, above all, specialists and laboratories, as well as individuals with exceptional intelligence able to construct a home laboratory (**new Lone Wolves**)
- Research is needed on **social determinants of the pandemic**, especially on the categories of **people who gain competences** (population size and their attitudes, psychological portraits etc.) which must **incorporating a security dimension**